

VOLUME 68

DECEMBER 1975

ISSN 0303 2515

Dr. FERDINAND ...

ANNALS

OF THE SOUTH AFRICAN
MUSEUM

CAPE TOWN

INSTRUCTIONS TO AUTHORS

1. MATERIAL should be original and not published elsewhere, in whole or in part. When accepted, copyright becomes the property of the Trustees of the South African Museum.

2. LAYOUT should be as follows:

- (a) *Masthead to consist of*
Title: informative but concise, without abbreviations and not including the names of new genera or species
Author's (s) name(s)
Address(es) of author(s) (institution where work was carried out)
Number of illustrations (figures, enumerated maps and tables, in this order)
- (b) *Abstract* of not more than 200 words, intelligible to the reader without reference to the text
- (c) *Table of contents* giving hierarchy of headings and subheadings
- (d) *Introduction*
- (e) *Subject-matter* of the paper, divided into sections to correspond with those given in table of contents
- (f) *Summary*, if paper is lengthy
- (g) *Acknowledgements*
- (h) *References*
- (i) *Abbreviations*, where these are numerous

3. MANUSCRIPT, to be submitted in triplicate, should be typewritten, double spaced with 2,5 cm margins all round. Tables and legends for illustrations should be typed separately, their positions indicated in the text. All pages should be numbered consecutively.

Major headings of the paper are centred capitals; first subheadings are shouldered small capitals; second subheadings are shouldered italics; third subheadings are indented, shouldered italics. Further subdivisions should be avoided, as also enumeration (never roman numerals) of headings and abbreviations.

Only generic and specific names should be underlined to indicate italics; all other marking up should be left to editor and publisher.

4. ILLUSTRATIONS should be reducible to a size not exceeding 12 × 18 cm (19 cm including legend); originals larger than 35 × 47 cm should not be submitted; photographs should be final size. A metric scale should appear with all illustrations, otherwise magnification or reduction should be given in the legend.

All illustrations, whether line drawings or photographs, should be termed figures (plates are not printed; half-tones will appear in their proper place in the text) and numbered in a single series. Items of composite figures should be designated by capital letters; lettering of figures is not set in type and should be in lower-case letters.

The number of the figure should be marked on the back of each illustration.

5. REFERENCES cited in text and synonymies should all be included in the list at the end of the paper, using the Harvard System (*ibid.*, *idem.*, *loc. cit.*, *op. cit.* are not acceptable):

(a) Author's name and year of publication given in text, e.g.:

- 'Smith (1969) describes . . .'
'Smith (1969: 36, fig. 16) describes . . .'
'As described (Smith 1969a, 1969b; Jones 1971) . . .'
'As described (Haughton & Broom 1927) . . .'
'As described (Haughton *et al.* 1927) . . .'

Note: no comma separating name and year
pagination indicated by colon, not p.
names of joint authors connected by ampersand
et al. in text for more than two joint authors, but names of all authors given in list of references

(b) Full references at the end of the paper, arranged alphabetically by names, chronologically within each name, with suffixes *a*, *b*, etc. to the year for more than one paper by the same author in that year, e.g. Smith (1969a, 1969b) and not Smith (1969, 1969a).

For books give title in italics, edition, volume number, place of publication, publisher.
For journal article give title of article, title of journal in italics (abbreviated according to the *World list of scientific periodicals*, 4th ed. London: Butterworths, 1963), series in parentheses, volume number, part number (only if independently paged) in parentheses, pagination (first and last pages of article).

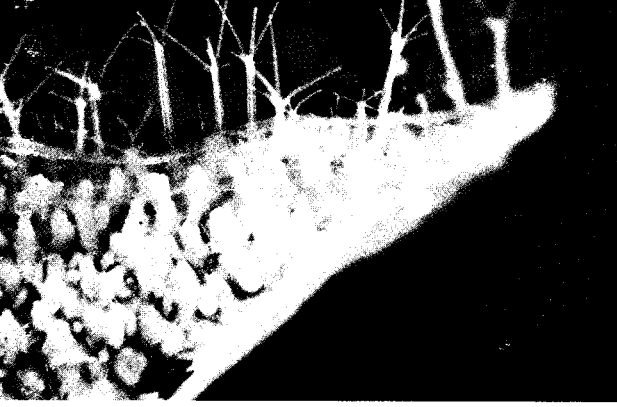
Examples (note capitalization and punctuation)

- BULLOUGH, W. S. 1960. *Practical invertebrate anatomy*. 2nd ed. London: Macmillan.
FISCHER, P.-H. 1948. Données sur la résistance et de le vitalité des mollusques.—*J. Conch.*, Paris 88: 100–140.
FISCHER, P.-H., DUVAL, M. & RAFFY, A. 1933. Etudes sur les échanges respiratoires des littorines.—*Archs Zool. exp. gén.* 74: 627–634.
KOHN, A. J. 1960a. Ecological notes on *Conus* (Mollusca: Gastropoda) in the Trincomalee region of Ceylon.—*Ann. Mag. nat. Hist.* (13) 2: 309–320.
KOHN, A. J. 1960b. Spawning behaviour, egg masses and larval development in *Conus* from the Indian Ocean.—*Bull. Bingham oceanogr. Coll.* 17 (4): 1–51.
THIELE, J. 1910. Mollusca: B. Polyplacophora, Gastropoda marina, Bivalvia. In: SCHULTZE, L. *Zoologische und anthropologische Ergebnisse einer Forschungsreise im westlichen und zentralen Süd-Afrika* 4: 269–270. Jena: Fischer.—*Denkschr. med.-naturw. Ges. Jena* 16: 269–270.

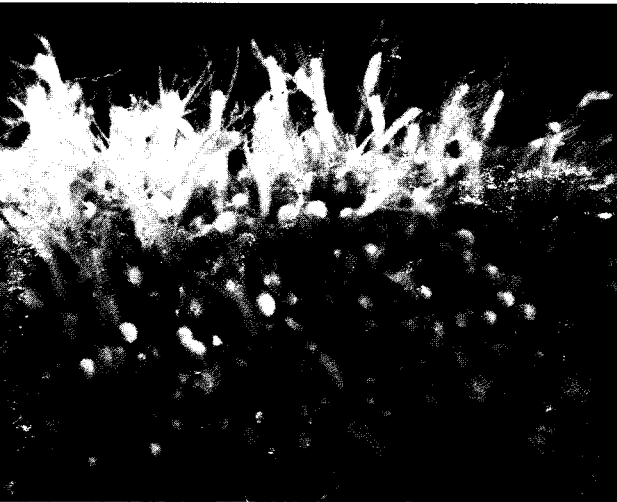
(continued inside back cover)

ANNALS OF THE
SOUTH AFRICAN MUSEUM

VOLUME 68



Tubularia africana. Colony on shell, with calcareous processes in foreground.

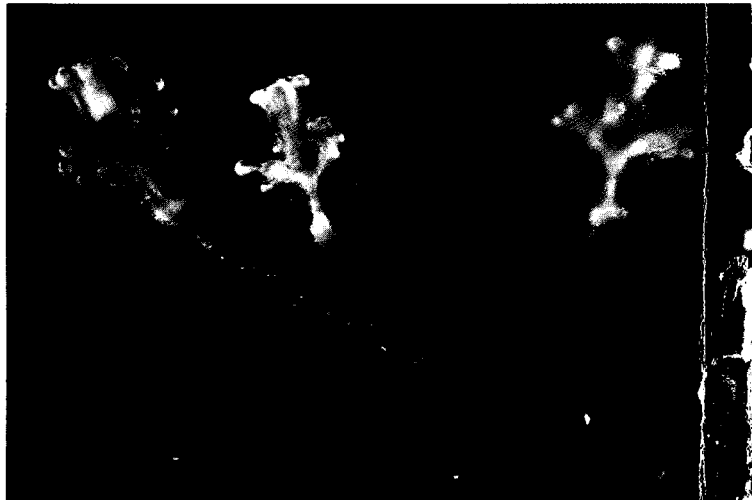


Actinia altispina. Colony on shell, with gastrozooids and gonozooids.



Tubularia warreni. Hydranth with gonophores.

graphs: D. Gerneke.



Bicornona elegans.

ANNALS OF THE SOUTH AFRICAN MUSEUM
ANNALE VAN DIE SUID-AFRIKAANSE MUSEUM

Volume 68 Band
December 1975 Desember



MONOGRAPH ON THE HYDROIDA
OF SOUTHERN AFRICA

By

N. A. H. MILLARD

Cape Town Kaapstad

The ANNALS OF THE SOUTH AFRICAN MUSEUM

are issued in parts at irregular intervals as material
becomes available

Obtainable from the South African Museum, P.O. Box 61, Cape Town

Die ANNALE VAN DIE SUID-AFRIKAANSE MUSEUM

word uitgegee in dele op ongereelde tye na beskikbaarheid
van stof

Verkrygbaar van die Suid-Afrikaanse Museum, Posbus 61, Kaapstad

OUT OF PRINT/UIT DRUK

1, 2(1, 3, 5-8), 3(1-2, 4-5, t.-p.i.), 5(1-3 5, 7-9),
6(1, t.-p.i.), 7(1-3), 8, 9(1-2), 10(1),
11(1-2, 5, 7, t.-p.i.), 15(5), 24(2), 27, 31(1-3), 33

Price of this part/Prys van hierdie deel
R22,50

Trustees of the South African Museum © Trustees van die Suid-Afrikaanse Museum
1975

ISBN 0 949940 81 X

Printed in South Africa by
The Rustica Press, Pty., Ltd.,
Court Road, Wynberg, Cape

In Suid-Afrika gedruk deur
Die Rustica-pers, Edms., Bpk.,
Courtweg, Wynberg, Kaap

